

Shadows of Paris

Henry Mancini

Con moto

Verse

F-

C7

F-

Bb-

G7



1.

C7

F-

C7

2.

C7

F-

Bridge

F7



Bb-

F-

G7

C7

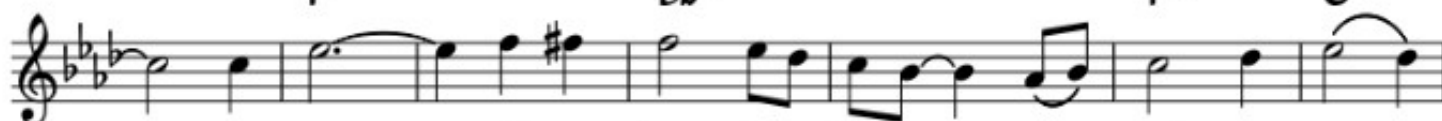


F7

Bb-

F-

G7



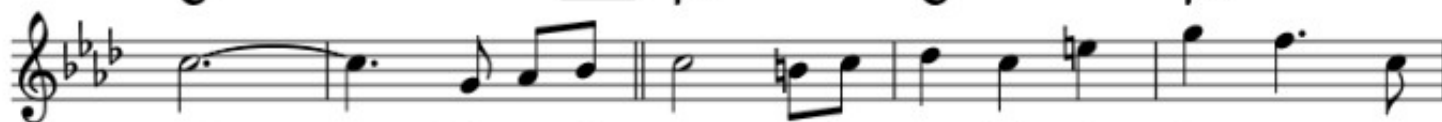
C7

Verse

F-

C7

F-



Bb-



G7

C7

F-

C7



The image shows a musical score for a song in F major. It consists of two staves of music. The first staff contains four measures of music with the following lyrics: "warm in the sha - dows of Par - is, when I know that". The second staff contains three measures of music with the following lyrics: "dawn means good - bye?". Chord symbols are placed above the notes: F- above the first measure of the first staff, C7 above the second measure, F- above the third measure, Bb- above the fourth measure, G7 above the first measure of the second staff, C7 above the second measure, and F- above the third measure. The key signature has one flat (Bb) and the time signature is 4/4.

F- C7 F- Bb-

warm in the sha - dows of Par - is, when I know that

G7 C7 F-

dawn means good - bye?